

## Two brownish reticulated patches on the thigh

### *Duas manchas castanhas reticuladas na coxa*

Sofia Antunes-Duarte<sup>1,a\*</sup>, Rita Bouceiro-Mendes<sup>1</sup>, and Luís Soares-de-Almeida<sup>1,2</sup>

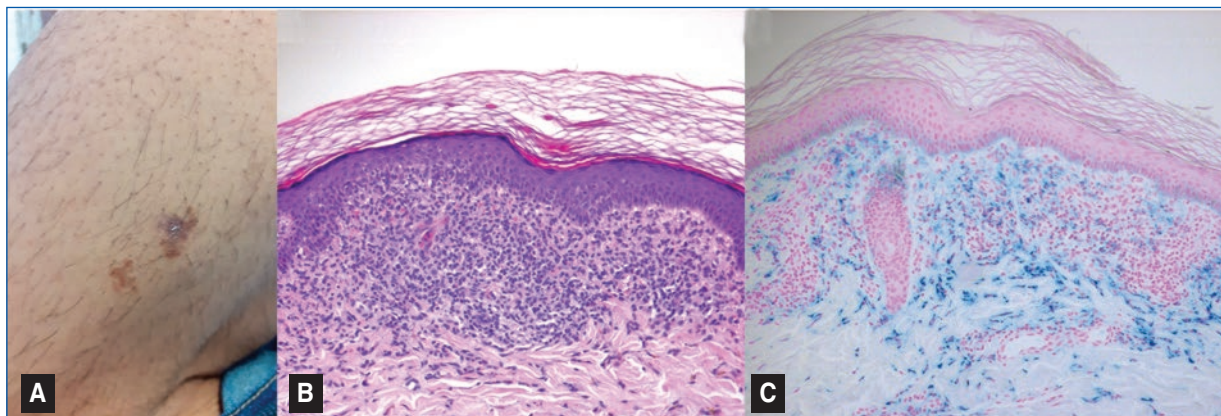
<sup>1</sup>Dermatology Department, Hospital de Santa Maria, Centro Hospitalar Universitário; <sup>2</sup>Unit of Research in Dermatology, Institute of Molecular Medicine, Faculty of Medicine, University of Lisbon, Lisbon, Portugal

<sup>a</sup>ORCID: 0000-0003-3662-0423

A 41-year-old healthy man presented with a 2-year history of asymptomatic, progressively enlarging lesions on the external aspect of the left thigh. Its onset could not be correlated with trauma, medication or contact with any substance. On examination, two reticulated brownish well-defined patches, with 1 and 1.5 cm in diameter, were observed (Fig. 1A). Biopsy showed a superficial dermal dense, band-like lymphocytic infiltrate accompanied by scattered extravasated erythrocytes (Fig. 2B).

A Perls' stain highlighted the hemosiderin deposition (Fig. 2C). It was consistent with lichen aureus (LA).

Lichen aureus is a rare variant of pigmented purpuric dermatoses (PPD), occurring mainly in childhood<sup>1</sup>. Although its etiology remains unknown, its pathogenesis seems to be related to inflammation and hemorrhage of superficial papillary dermal vessels, usually capillaries<sup>2</sup>. It clinically presents with persistent asymptomatic golden to brown colored macules and



**Figure 1.** Lichen aureus. **A:** clinical picture of two reticulated brownish patches on the thigh. **B, C:** histopathologic picture revealing a lichenoid infiltrate in the upper dermis with erythrocyte extravasation and hemosiderin deposition evidenced by Perls' stain (B. H&E, x100; C. Perls' stain, x100).

**\*Corresponding author:**

Sofia Antunes-Duarte

E-mail: sofia.duarte.a@gmail.com

2795-501X / © 2023 Portuguese Society of Dermatology and Venereology. Published by Permanyer. This is an open access article under the CC BY-NC-ND license (<http://creativecommons.org/licenses/by-nc-nd/4.0/>).

**Received:** 09-02-2023

**Accepted:** 13-02-2023

DOI: 10.24875/PJDV.23000012

Available online: 28-02-2023

Port J Dermatol and Venereol. 2023;81(2):143-144

[www.portuguesejournalofdermatology.com](http://www.portuguesejournalofdermatology.com)

patches, usually on the lower limbs, with a unilateral distribution<sup>2,3</sup>. Dermoscopy can be useful showing brownish or coppery-red amorphous area, red dots and globules, gray dots and a network of brownish to gray interconnected lines<sup>2,3</sup>. The definitive diagnosis is based on histopathology, with characteristic findings described in the reported case<sup>1-3</sup>. The therapeutic arsenal includes PUVA, calcineurin inhibitors and corticosteroids, frequently with unsatisfactory results<sup>3</sup>. Patients should be reassured regarding the benign and chronic nature of the condition.

### Funding

None.

### Conflicts of interest

None.

### Ethical disclosures

**Protection of human and animal subjects.** The authors declare that no experiments were performed on humans or animals for this study.

**Confidentiality of data.** The authors declare that they have followed the protocols of their work center on the publication of patient data.

**Right to privacy and informed consent.** The authors have obtained the written informed consent of the patients or subjects mentioned in the article. The corresponding author is in possession of this document.

### References

1. Mahajan VK, Chauhan P. Lichen aureus. *Indian J Pediatr.* 2014; 81(4):420-1.
2. Kolm I, Buset C, Flury U, Nosek D, Kazakov DV, Kempf W. Lichen aureus with pseudolymphomatous infiltrate. *J Cutan Pathol.* 2021;48(5):669-673.
3. Tortelly VD, Silva RS, Mota ANCM, Piñeiro-Maceira J. Agminate Lichen Aureus. *An Bras Dermatol.* 2013;88(6 Suppl 1):S143-5.