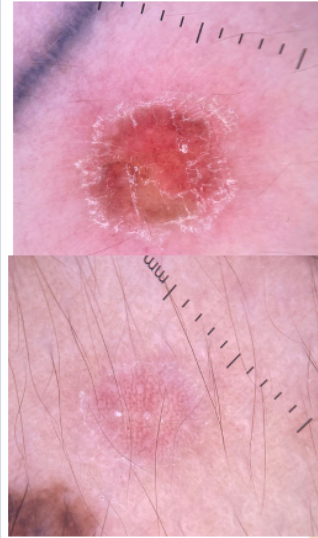


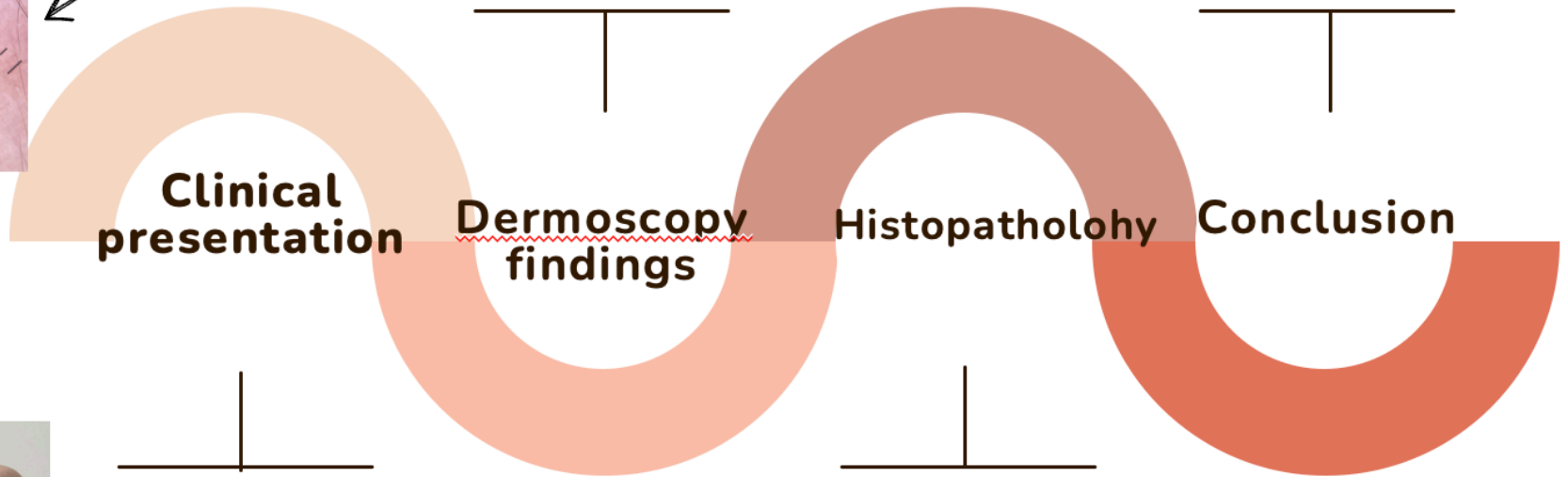
Dermscopy As A Significant Tool In Diagnosing An Exuberant Case Of HIV-Associated Pityriasis Lichenoides et Varioliformis Acuta (PLEVA).



- Distinct morphological patterns
- Characteristic target-like lesions composed of a peripheral vascular ring.
- We also present a type of presentation not yet reported in the literature

Significant tool in diagnosis

- Facilitate the differentiation from similar conditions and differential diagnosis.
- Provides an early suspicion
- HIV is a significant trigger.



- Erythematous macules
- Pustules or vesicles containing hemorrhagic fluid
- Central ulcerations

Confirmed the diagnosis

- Vacuolar interface dermatitis
- Parakeratosis, lymphocytic and neutrophilic exocytosis,
- Corneal microabscesses

